

Safe Pipelines

A Publication of the Pipeline Safety Trust
Fall 2009



Mission of the Trust

The Pipeline Safety Trust promotes fuel transportation safety through education and advocacy, by increasing access to information, and by building partnerships with residents, safety advocates, government, and industry, that result in safer communities and a healthier environment.

Pipeline Safety Trust Leadership

Board of Directors

Bob Rackleff - President

Tallahassee, Florida

Eric "Rick" Kessler - Vice President

Washington, D.C.

Bruce Brabec - Treasurer

Bonaire, Netherlands Antilles

Rebecca Johnson - Secretary

Bellingham, Washington

Glenn Archambault

Phoenix, Oregon

Michael T. Guidon

Seattle, Washington

Katie Myers

Woodinville, Washington

Carol Parker

Placitas, New Mexico

G. "Ram" Ramachandran

Destrehan, Louisiana

Alan Rathbun

Shelton, Washington

Edwin "Skip" Williams III

Bellingham, Washington

Staff

Carl Weimer - Executive Director

Dick Goldsmith - Program Director

Marissa Rosati Cool - Program Assistant

Chris Coffin - Webmaster/Graphics

What's in this issue...

- *Page 2 - PIPA and Its Consultation and Planning Zones*
- *Starting Page 2 - Community Technical Assistance Grant Awards*
- *Page 5 - What's a Demonstration Grant?*
- *Page 10 - PIPA - What's Next?*
- *Page 11 - Remembering a Tragedy and Reflecting on a Decade of Healing*
- *Page 11 - Changes to the Trust's Board of Directors*

What Do Communities Want To Know About Pipelines?

One of the Pipeline Safety Trust's highest priorities has always been ensuring that current, accurate information about pipelines is available to the communities that would be most affected if something goes wrong. Even before the Trust was a reality, many of us pushed the industry and federal regulators to make as much information available as possible about specific pipelines. We have been successful in getting better pipeline incident data, enforcement records, and pipeline maps put online.

When the Pipeline Safety Improvement Act was being drafted in 2001, we pushed for the inclusion of a program to make grant money available so local governments and community groups could hire independent experts to help them investigate and answer questions about the pipelines running through their communities, and enable them to be a legitimate part of various decision-making activities. This program was fashioned after a similar, successful technical assistance grant program operating within EPA's Superfund program since 1988.

We were successful in getting such a grant program authorized in the Pipeline Safety Improvement Act of 2002, but four years later—when the federal pipeline safety program went in front of Congress for reauthorization—the federal Office of Pipeline Safety still had not moved forward to implement this grant program and Congress still had not appropriated any money for it. At that time, we worked with friends in Congress to insert a clause in the Pipeline Inspection, Protection, Enforcement and Safety Act of 2006, which held other monies hos-



To stimulate local involvement in pipeline safety, the federal government recently awarded technical assistance grants to 25 communities and organizations in 17 states.

tage until this community grant program began. In 2008, Senator Patty Murray (WA) managed to insert \$1 million into the federal budget for the program.

Last fall, we worked with the Office of Pipeline Safety to draft criteria for the selection of applications to this grant program. This spring, the grant program was announced and applications submitted by eligible government units and community groups.

Just recently, the first round of these grants was awarded and we've devoted most of this issue of *Safe Pipelines* to looking at how communities across the nation will use this money to help them understand and address local pipeline issues.

At the Trust's annual pipeline safety conference in November, we are bringing together people from many of these communities to discuss their pipeline safety concerns and how their grant-funded projects will help in dealing with them. At this conference, with its theme of "Pipeline Safety—What Communities Want to Know," they'll also be exchanging ideas and information with other community representatives, as well as federal and state regulators and pipeline operators who are experts on the pipelines that serve our country.

To find out what communities across the country want to know about pipelines, turn the page...

Internet Sites for Finding Basic Pipeline Information:

Pipeline Incident Data <http://primis.phmsa.dot.gov/comm/reports/safety/>

Enforcement Records <http://primis.phmsa.dot.gov/comm/reports/enforce/Enforcement.html>

Transmission Pipeline Maps <https://www.npms.phmsa.dot.gov/searchp/newlogin.asp?Search=Pub>

<http://pstrust.org>
Phone: 360-543-5686
Fax: 360-543-0978
info@pstrust.org

Published by the Pipeline Safety Trust
1155 North State Street
Suite 609
Bellingham, WA 98225

Pipeline Safety
TRUST
Credible. Independent. In the public interest.

Community Technical Assistance Grants

PIPA and Its Consultation and Planning Zones

Some of the community technical assistance grants awarded by the Pipeline and Hazardous Materials Safety Administration (PHMSA) mention PIPA, as well as Consultation and Planning Zones. To better understand those grants, here's a primer on these terms:

PIPA

PIPA is the acronym for the Pipelines and Informed Planning Alliance, which PHMSA initiated in early 2008 to implement recommendations from a comprehensive federal study of land use practices, zoning ordinances, and the preservation of environmental resources on transmission pipeline right-of-ways. PIPA's goal is to produce—by consensus—an initial set of recommended practices for risk-informed land use planning and development adjacent to transmission pipelines; these would be practices that can be applied consistently around the country.

PIPA stakeholders include property developers, the pipeline and real estate industries, the public, and government agencies at the local, state and federal levels. For more than a year, stakeholder representatives have been looking at land use practices that would protect communities and pipelines. They also have been developing recommended practices for improving communications between stakeholder groups as new construction is being considered in the vicinity of existing pipelines and new pipeline routes are being proposed.

Consultation Zone

The Consultation Zone is one of the land use practices that PIPA is considering as a recommended practice. A local government, by ordinance, would designate an area within so many feet of an existing pipeline as a Consultation Zone and require anyone proposing to develop land within this area to consult with the pipeline operator about devel-

continued on page 3

Washington State

Association of Washington Cities (AWC): Enhancing public safety by improving local government land use planning and permitting practices in the vicinity of transmission pipelines (\$50,000)

Although AWC is the grantee, its partners are a wide range of Northwest pipeline safety stakeholders: the Pipeline Safety Trust (PST); the Municipal Research and Services Center (MRSC); the Washington State Citizens Committee on Pipeline Safety; the Washington State Association of Counties; the Northwest Gas Association; and the state of Washington's Utilities and Transportation Commission.

This project will be built on earlier activities and relationships [see below] and the recommended practices now being finalized by the Pipelines and Informed Planning Alliance (PIPA). MRSC and PST staff knowledgeable and experienced in land use practices will give technical assistance to elected officials and land use planners in adopting and implementing these measures. This aid will be delivered through in-person meetings, phone calls, and e-mails.

To build awareness of the need for these recommended practices and the availability of technical help, presentations will be given at state conferences of stakeholder groups. These will be followed up with in-depth, interactive Internet sessions (webinars) on land use planning and pipeline safety.

These activities will be promoted and supported by the development of a comprehensive land use planning and pipelines web site, the establishment of a listserv to exchange information about the recommended practices, and the publication of electronic newsletters.

Ahead of the Curve

Over 50 percent of Washington's major pipeline miles are located in nine of its 10 fastest growing counties.

With this information in hand, five of the grant partners in 2005—working cooperatively with pipeline operators, land-use planners and other impacted groups—jointly developed best practices and model planning documents to reduce the risks that growing populations pose to existing pipelines; they disseminated these materials in workshops around the state. The next year, these partners issued a report based on their activities and information gathered at these workshops: "Land Use Planning in Proximity to Natural Gas and Hazardous Liquid Transmission Pipelines in Washington." This report can be downloaded at <http://www.mrsc.org/artdocmisc/landusegas.pdf>

Their report forms a significant part of the recommended practices being developed by PHMSA's Pipelines and Informed Planning Alliance (PIPA).

Why Nine Grant Summaries Are Missing

Before going to press, Safe Pipelines was unable to obtain project proposals for the following grants: Arizona: City of Mesa (\$50,000 for public education program using TV-based, targeted interactive advertising). Florida: Cities of Blountstown and Clearwater; Lake Apopka Natural Gas. (\$50,000 each for creation of geographic information system (GIS) of distribution system). Georgia: City of Elberton; Toccoa Natural Gas (\$50,000 each for creation of GIS of distribution system). Kentucky: Prestonsburg City Utilities Commission (\$26,000 for upgrading and enhancing its gas leak detection program). Nebraska: Nebraska City Utilities (\$16,500 for enhancing its pipeline leak detection capabilities). Ohio: City of Hamilton (\$50,000 for completing an engineering "make piggable" study of a high pressure gas distribution main).

What Do Communities Want to Know About Pipelines?



Bellingham, Washington

Pipeline Safety Trust: Determining effective communications strategies to engage local public officials to improve pipeline safety in their communities (\$47,250)

Communications efforts such as the Pipelines and Informed Planning Alliance (PIPA), the Common Ground Alliance (CGA), and the American Petroleum Institute's Recommended Practice 1162 (*Public Awareness Programs for Pipeline Operators*) have been geared towards raising the awareness of local public officials about pipeline issues. But there is a growing body of research indicating that raising awareness does not necessarily correlate to behavioral changes that produce the desired outcomes. For example, making local public officials aware of pipelines in their community and the "one call" system—by itself—may not lead to the adoption and implementation of policies that help prevent damage to pipelines.

Social Marketing—a set of principles for designing communications efforts that focuses on changing behaviors by clearly identifying successful messages, delivery strategies, barriers to success, and incentives—has been used to create remarkably effective education and outreach programs. PIPA's "Seven Step Communications Model" is based on Community-Based Social Marketing and for this project the Pipeline Safety Trust will "test pilot" the PIPA model with local public officials. The outcome will be the production of communication strategies and tools that will lead local public officials to proactively adopt or improve pipeline safety policies and practices.

To develop a communications program targeted at this group using PIPA's recommended Seven Steps, the Trust will hire experts in Community-Based Social Marketing, program development and evaluation, and statistical analysis. These experts will bring together a small number of people who represent those most likely to be involved in such a program—land use planners, pipeline operators, government officials, and non-profit associations. This group—the Protocol Advisory Group—will help develop a research protocol, as well as review the research findings.

The researchers will conduct interviews and surveys with local public officials in two different communities—one with a heightened awareness of pipelines because of an emergency or contentious siting issue, the other where pipelines are still clearly not of concern. In doing so they will identify opportunities for obtaining local public officials' buy-in to specific activities such as land use policies and damage prevention, as well as barriers and incentives to bringing about the desired safety behaviors and effective outreach strategies.

The Protocol Advisory Group will review the research findings and develop potential program elements, which will incorporate the Social Marketing principles of Product, Placement, Pricing and Promotion. After local public officials' focus groups review the program elements, a proposed outreach program will be written, along with recommendations for the program's design, performance measurements, and on-going program improvement. Once the program is produced, it will be distributed widely and speakers will be available to discuss the project's outcomes at conferences and workshops.

Making Reactive Local Government Officials "Proactive" on Pipeline Safety

Local public officials—city and county elected officials and employees—are a key group in improving pipeline safety in areas where a pipeline failure could pose a significant risk. However, their large, mandated workloads often cause them to react rather than address issues before they arise. Because pipelines are out of sight—and generally out of mind—this group's reactive "mindset" poses a significant barrier to proactively implementing safe pipeline practices.

PIPA

(continued)

opment impacts that could affect the pipeline's integrity. If the developer and operator aren't able to reach agreement on changes to the proposal, the operator could bring its concerns to the attention of local government officials before they decide whether the project should or should not be built.

Planning Zone

PIPA also is discussing whether the Planning Zone concept should be included in its initial list of recommended practices. Again, it would require local government action: the Planning Zone would be an area where people or property potentially could be affected by a pipeline failure. Ideally, local government would set the size of the zone based on the characteristics of the pipeline, such as operating pressure and potential spill or release volume, and the area in which the pipeline is situated.

Unlike the Consultation Zone where operators and developers try to reach agreement by talking through their issues, development in the Planning Zone would have to conform to local government mandates. For example, if a hospital were proposed to be built there, the local government might have requirements for how far the facility had to be built from the pipeline; its orientation to the pipeline; and the materials that can be used on the exterior walls facing the pipeline.

The Planning Zone concept has been one of the most—if not the most—controversial of the land use practices that PIPA has been discussing. The reasons why it's been so hotly debated are on page 10 of this issue of Safe Pipelines.

More information about PIPA and its activities are available online at <http://primis.phmsa.dot.gov/comm/PIPA.htm>

The draft version of the PIPA report is available under "Recent Publications" on the Pipeline Safety Trust's website at: <http://www.pstrust.org>

Community Technical Assistance Grants



Cordova, Alaska

Copper River Watershed Project (CRWP):
Facilitating citizen monitoring of the Trans-Alaska Pipeline System (TAPS) (\$48,380)

CRWP, a community-based non-profit, works to foster the long-term sustainability of the region's wild salmon economies and cultural heritage. CRWP will develop its monitoring network through cultivating partnerships with every community along TAPS.

CRWP's initial task is creating a listserv of community leaders and interested citizens. Concurrently, CRWP staff and technical consultants will research TAPS maintenance and operations activities to identify areas of greatest concern should the pipeline be breached.

Once these areas have been identified, CRWP will develop monitoring strategies and measures of safety for tracking the activities of Alyeska Pipeline Service Company (APSC), TAPS' operator. Among the activities to be monitored are APSC's monthly reports, integrity management reports, drill exercises, and PHMSA enforcement actions. Using the Pipeline Safety Trust's work as a model, CRWP also will work with APSC to develop communication and data sharing protocols.

To increase community awareness and help its citizens' network monitor TAPS, CRWP will develop a web site, make community presentations, develop public education materials, and conduct classroom activities.



A part of the Trans-Alaska Pipeline, near the Denali Fault, designed to withstand earthquake movements.

Photo: USGS



Suisun City, California

Tides Center: Evaluating the safety of aging pipelines within a populated pipeline corridor (\$50,000)

Through its Healthy Community Research for Suisun City project, Tides Center, a non-profit that works for progressive social change nationally, will conduct a baseline study of the city's pipelines. The study will provide independent predictions of the pipelines' life spans, the risks these pipelines pose to the human and natural environment, and risk mitigation measures.

During the study, researchers will be looking at—among other areas— data on pipeline materials, corrosion protection, installation history, and soil. The study findings, which will be disseminated to the public, local government officials, and pipeline operators, should initiate a dialogue between these groups on pipeline safety in the area.

At Stake—Natural Resources and Local Economies

On its 800-mile route from the North Slope to Prince William Sound, the Trans-Alaska Pipeline System (TAPS) crisscrosses 180 miles of the Copper River drainage, the route's most seismically active region. The region's residents fear a spill from a pipeline breach could quickly end up in the main stem of the river and damage spawning and migratory habitats of the world-famous Copper River salmon.

Salmon are "the bedrock" of the Copper River region's economies, which rely on the subsistence, commercial, and sport fisheries. Also within the river's corridor are waterfowl and game, as well as public recreational lands and extensive private land holdings of two Alaska Native Regional Corporations.

Although designed to have a 30-year lifespan, TAPS is 33-years-old and its right-of-way lease was recently renewed for another 20 years. As a cost-saving measure, TAPS now operates with fewer staff because several pump stations were automated.

Corrosive Soil + Aging Pipelines = ?

Suisun City, California, with a population of over 26,000 within a four square mile area, is located 46 miles southwest of Sacramento and within a few miles of Travis Air Force Base.

The city abuts Suisun Marsh, which is the largest contiguous brackish water marsh remaining on the west coast of North America and encompasses 116,000 acres. The marsh is a critical part of the San Francisco Bay-Delta estuary ecosystem.

Suisun City's natural gas and hazardous liquid pipelines—40 to 50-years-old—are situated in corrosive wetland soil. Although the pipelines originally were located away from populated areas, residences and businesses now sit adjacent, the product of "urban sprawl."

What Do Communities Want to Know About Pipelines?

Brookings County, South Dakota

Brookings County: Using PIPA recommended practices to create and implement a pipeline safety chapter to its zoning ordinance (\$12,000)

PIPA's draft practices recommend the development of Consultation and Planning Zones by local governments. (see sidebar on pages 2 and 3). Using these recommended practices as a starting point, Brookings County will use its demonstration grant to develop a chapter in its zoning ordinance to protect existing and proposed pipelines. Robert Hill, representing the county and the National Association of County Planners, is a member of PIPA's Protecting Transmission Pipelines Task Team.

In writing the ordinance, the county will be working with a wide range of stakeholders. These include two municipalities through which the existing pipeline runs; all landholders who live within a 1,500 foot radius of the existing pipeline; emergency responders from five communities; Northern Natural Gas Company, the pipeline owner; and the Dakota, Minnesota and Eastern Railroad, whose tracks cross the pipeline

Montana-North Dakota-South Dakota

Northern Plains Resource Council: Obtaining and disseminating pipeline construction and safety information to landowners affected by a proposed international pipeline (\$36,103)

To create the Pipeline Landowners Exchange Project, the Northern Plains Resource Council, a Montana non-profit, brought together landowners in Montana, South Dakota and North Dakota who would be impacted by TransCanada's proposed Keystone XL pipeline. The project is a pipeline safety education program that draws on the wisdom and experience of North Dakotans already affected by the first Keystone Pipeline—a similar hazardous liquid pipeline being constructed in similar terrain.

During a three-day field trip, a small group of Montana and South Dakota landowners will tour Keystone Pipeline facilities in North Dakota. They also will meet with TransCanada officials, local public officials and landowners to discuss pipeline safety concerns, preventative measures, and response and remediation actions.

The information obtained during the tour and the group's recommendations will be summarized in a written public report. These "findings" and recommendations also will be discussed at public meetings in Montana and South Dakota, posted on the Northern Plains web site, distributed to the news media, and mailed directly to Montana and South Dakota landowners along the proposed Keystone XL route.

Rural Planning for the Future

Determined by the 2000 Census to be the fourth most populous county (28,220) in the state, Brookings County embraces 805 square miles.

Of immediate concern is a 15.1 mile natural gas transmission line running parallel to a federal highway and through two of the county's municipalities and three of its townships. About 217 people live within a 1,500-foot radius of this pipeline and of these, 69 live within a 660-foot radius.

Within the next three years, the county may have another pipeline. If a 300 megawatt energy facility proposed to be sited in the county is built, this pipeline—12 miles long—would transport natural gas from the Northern Border Pipeline, situated in adjacent Deuel County, to the facility.

The Northern Tier States—Groundwater Protection

The proposed Keystone XL pipeline project, if built, would transport crude oil extracted from tar sands in Alberta, Canada, to refineries in Texas through steel pipe 36 inches in diameter. The northern U.S. section of this 1,980 mile pipeline would cross lands in Montana, North Dakota, South Dakota and Nebraska before connecting with the existing Keystone Pipeline in Steele City, Nebraska; both pipelines are owned by TransCanada.

Where the pipeline would run through Montana and South Dakota, a significant portion of the residents rely on groundwater for agricultural and domestic uses. So a high priority is to prevent groundwater contamination from a pipeline failure or leak.

What's a Demonstration Grant?

The Pipeline Inspection, Protection, Enforcement and Safety Act of 2006 required that at least the first three community technical assistance grants awarded by PHMSA be "demonstration" grants for no more than \$25,000 each. Eligibility was limited to communities that participated in the Pipelines and Informed Planning Alliance (PIPA) and only for projects designed to target the implementation of PIPA's best practices. Four demonstration project applications were submitted and all four projects were awarded grants: Brookings County, South Dakota; the City of Fort Worth, Texas; Montgomery County, Virginia; and the City of St. Peters, Missouri.

Community Technical Assistance Grants

Preparation Is Important

Kansas is primarily a rural state with many small communities that operate their own municipal gas utility. Over the last several years, flooding, tornadoes, and winter storms have caused significant damage to the infrastructure of the state's utilities.

These forces of nature—and their consequences—have underscored the need for Kansas' municipal natural gas utilities to have emergency response plans in place and to help each other when an emergency overwhelms an individual utility.

Kansas

Kansas Municipal Utilities (KMU): Providing technical assistance to help Kansas' municipal gas utilities prepare for system emergencies and promoting participation in a state-wide mutual aid response program (\$ 50,000)

KMU, the state association for municipally owned and operated utilities, will use the grant to have technical advisors review and revise, if necessary (or develop, when appropriate), the emergency response plans of the state's 62 municipal natural gas systems. These consultants also will train utility staffs on the plans.

In addition, KMU will use the grant to promote the participation of these municipal natural gas utilities in the Kansas Mutual Aid Program for Utilities (KSMAP). KSMAP is a coordinated effort by participating utilities to provide equipment and personnel when an emergency arises and the affected utility lacks resources to mount the needed response. KSMAP was developed by KMU, other state utility organizations, the Kansas Corporation Commission, the Kansas Department of Health & Environment, and the Kansas Division of Emergency Management.

St. Peters, Missouri

City of St. Peters: Creating "Partners for Pipeline Safety" community web site (\$8,784)

The City of St. Peters was awarded a demonstration grant to build an educational and interactive pipeline safety web site. This project was designed to implement PIPA's New Development Recommended Practice 01: *Pipeline Operators and Local Governments Should Provide Information to Property Developers/Owners*. The city is represented on PIPA by Cathy Pratt, who co-chairs PIPA's Protecting Communities Task Team.

The web site will be designed to achieve such goals as improving stakeholder communications, encouraging best practices in damage prevention, educating and increasing public awareness about pipeline safety, and enhancing community protection and safety. The web site will include links to GIS maps; pipeline companies operating in the community; and information about land use planning, damage prevention, and hazards to pipelines (for example, trees and vegetation). Stakeholders also will be able to view city ordinances and pipeline requirements on-line, as well as be linked to other pipeline-related sites such those of PHMSA and its Office of Pipeline Safety.

Suburban Growth Moves Closer to Pipelines

Located 30 miles west of St. Louis, St. Peters is the seventh fastest growing city in Missouri and among the state's 10 most populous cities.

St. Peters has seen tremendous growth since 1970 when fewer than 500 people lived in an area of less than a square mile. Today, more than 58,000 people living in an area of almost 22 square miles call St. Peters home.

The city also has eight pipelines in close proximity to residential development.

Building Pipeline Safety Partnerships

Springfield, a city of more than 150,000 nestled in the Ozark Mountains, is the anchor of a five-county metropolitan area exceeding 400,000.

City Utilities of Springfield operates a natural gas transmission and distribution system serving over 80,000 customers. The utility makes its fire training site, one of the few in the region, available to many gas companies and fire departments.

Springfield, Missouri

City Utilities of Springfield: Upgrading its fire training site and associated equipment and constructing a leak training area (\$41,383)

City Utilities will upgrade its 22-year-old fire training site, where hundreds of gas workers and fire department personnel have received hands-on training in fighting live natural gas fires.

The grant also will fund construction of a leak training area adjacent to the fire training site. This will enable the utility—as well as other area gas utilities and fire departments—to do leak survey and leak pinpointing training without having to travel to Illinois, the nearest training facility. When completed, the area will have two small buildings for training personnel on indoor and underground leaks and a field of underground piping. Because the piping will have locator wires, underground line location training also can be conducted there.

What Do Communities Want to Know About Pipelines?



Fort Worth, Texas

Fort Worth League of Neighborhoods: Obtaining information and raising community awareness about pipeline issues (\$48,305)

City of Fort Worth: Creating a central repository of pipeline data for government officials and the public (\$25,000)

In its funding request, the Fort Worth League of Neighborhoods pointed out that:

“Over the last several years, Fort Worth, Texas has become the fastest growing and most densely developed urban gas drilling site in the nation. Never before has the United States or Texas seen an urban environment where gas drilling and accompanying pipelines are as numerous or as close to individual residents and neighborhoods as they are coming to be in Fort Worth. Because of its tremendous amount of urban drilling, other cities and citizens across the nation are looking to Fort Worth to model best practices on pipeline safety, public information, and citizen involvement.”

The League—an umbrella organization for more than 95 neighborhood groups representing over 300,000 citizens—will use its grant to help fund a series of activities centered around the production of a “State of Gas Pipelines in Fort Worth” report.

Part of the grant will be used to hire technical and policy advisors to identify distribution and gathering pipeline locations; ascertain whether the common routing of pipelines is feasible; assess the risks these pipelines pose and how to best educate the public about them; evaluate the effectiveness of the city’s pipeline ordinance and its pipeline regulatory programs; and make recommendations for incorporating local planning for pipelines into the City’s gas drilling procedures. The results of their research will be published in the “State of Gas Pipelines in Fort Worth” report.

Another portion of the grant will fund the dissemination of the report’s findings to the public. Among the planned outreach activities are two large public forums and an “aggressive” public relations campaign.

Lastly, the League intends to conduct an on-going annual review of the gas pipeline issues that were addressed in the “State of Gas Pipelines in Fort Worth” report.

The demonstration grant awarded to City of Fort Worth will help address a major concern of the League: that information about pipelines and pipeline operations is not easily available to local government officials and the public when land use and other pipeline-related decisions are being made. Funds from this grant will enable the city to extract pipeline information contained in such paper documents as engineering plans and easement agreements, enter this data into the city’s Geographical Information System (GIS), and make it easily accessible and readily available through a public map viewer to anyone who has need of it.

In its grant application, the city acknowledged that it has been difficult for its staff and the public to research pipeline locations and easements because of the large volume of paper documents on file. The city—like the League—also pointed to Fort Worth’s rapid growth and the boom in gas production from the Barnett Shale as driving forces behind the need to have accurate and timely information for city departments, its elected officials, developers, and the public at large. City Councilman Jungus Jordan represents the city and the National League of Cities on PIPA where he is a member of the Communications Task Team.

When Populations and Pipelines Collide....

Fort Worth, the 17th largest city in the United States, also is one of the nation’s fastest growing cities. Its population now exceeds 770,000.

Within the Fort Worth basin, which covers a 20-county area in North Central Texas and has about 11, 271 producing gas wells, lies the Barnett Shale. This geological formation has been described as the “largest natural gas play in the state of Texas,” and one commentator said “it might soon become the largest in the nation.”


The “sweet spot” of the Barnett Shale is centered over the city and within the city limits—an area of 298.6 square miles—are at least 1,185 gas wells. This is an unprecedented amount of gas drilling activity in an urban area, with concomitant numbers of gas pipelines in and near the city.

If you can’t make it to the Pipeline Safety Trust’s fourth annual conference in New Orleans on November 5th & 6th but would still like to find out more about some of these grants, the Trust with assistance from the Pipeline and Hazardous Materials Safety Administration will be webcasting parts of the conference live. Information about how to log-in will be available the day of the conference on our website at: <http://www.pstrust.org/conference/2009conference.htm>

After the conference most of the PowerPoint presentations and a video archive of many of the conference sessions will also be available on the same web page.

Community Technical Assistance Grants

Chester County, Pennsylvania Receives Three Grants



Bradford Glen Home Owners Association (HOA): Assessing the potential impacts of an existing natural gas transmission pipeline and the co-location of a proposed natural gas pipeline in High Consequence Areas (\$50,000)


The Bradford Glen Home Owners Association is a non-profit group of 492 single-family homeowners. The Columbia natural gas pipeline already is routed through its lands, which include High Consequence Areas (HCAs): in some instances the pipeline is within 50 feet of a residence. Should the Mid-Atlantic Express pipeline be built as proposed alongside the existing pipeline, it could pass even closer to some residences, and also could affect the control and quality of the Association's storm water drainage, potentially affecting two local creeks.

Among the activities the Association will undertake with the grant are: the development of a land use plan that takes into consideration safely maintaining these pipelines; assessments of the environmental impacts associated with the Mid-Atlantic Express pipeline and its alternative routes; and a detailed analysis of the potential impact radius in its HCAs should either or both of these pipelines fail catastrophically. The Association also will assess and document the location of these pipelines in relation to its current utility infrastructure, as well as ascertain whether the installation of additional shut-off valves in or near its HCAs will improve safety.


S.A.V.E. is a non-profit primarily representing citizens and communities in the southern part of the county. This project is centered on seven of the county's southern municipalities, which are home to three watersheds and prime farmlands, and concerns the existing Columbia natural gas transmission pipeline and the proposed Mid-Atlantic Express pipeline. The grant will be used to provide technical assistance, education and outreach, and a central point of communications on pipeline safety matters related to these pipelines.

S.A.V.E.'s efforts to foster damage prevention and enhance community safety will include an analysis of the effects of the Mid-Atlantic Express' alternative routes on the human and natural environment; review and coordination of the municipalities' land use, safety and emergency management ordinances; and assistance to the municipalities in implementing any revisions to these ordinances.

To educate and engage the community and elected officials on pipeline issues, S.A.V.E. will hold public workshops; produce informational materials; develop a web site on best practices, model ordinances, and emergency response procedures; and purchase software that will help foster communications between county residents, elected officials, pipeline operators, and regulatory agencies.



Safety, Agriculture, Villages, and Environment, Inc. (S.A.V.E): Providing technical assistance and education and outreach to municipalities where a gas transmission pipeline already exists and a new natural gas pipeline is proposed in the same right-of-way (\$50,000)



West Vincent Township: Providing technical assistance and education and outreach to communities in the path of a proposed natural gas transmission pipeline (\$50,000)

The routing of the proposed Dominion Keystone natural gas transmission pipeline through northern Chester County was the impetus for the grant application submitted by West Vincent Township; its project partners are West Pikeland and East Nantmeal Townships, the West Vincent and West Pikeland Land Trusts, the Green Valleys Association, and the French & Pickering Creek Conservation Trust. Together they will work to strengthen and about this pipeline available. The project partners will create an

increase public participation by making information informational web site about the proposed pipeline; hold public meetings to obtain comments on the pipeline's location and citizens' safety and environmental concerns; and conduct reviews of land use and environmental ordinances. They'll also hold seven public workshops on such topics as pipeline engineering, safety and permitting; the Federal Energy Regulatory Commission (FERC) process; and emergency response in HCAs.

Another product of the project will be a digital map of the pipeline path. This map, which will help in the preparation of emergency response plans and the adoption of land use practices to protect the pipeline from damage, will be developed using a Global Positioning System (GPS). Among the areas to be marked are wetlands, and historic sites; residences and facilities (for example, hospitals and schools) at the greatest risk of a pipeline failure due to their close proximity to the pipeline; and existing and potential developments.

Sitings in Suburbia

With its county seat 30 miles west of Philadelphia, Chester County is a once-agricultural area gone suburban: within its 760 square miles are more than 450,000 people who live in 73 municipalities. It still has rich farm lands and significant natural areas, including the largest area of contiguously protected public and private open space on the Mid-Atlantic seaboard, located in south county.

Currently, there are 27 natural gas transmission and petroleum products pipelines in the county and at least two more pipelines are proposed for routing through there: the AES Mid-Atlantic Express pipeline, which would begin at the Sparrows Point, Maryland LNG Import Terminal, and the Dominion Keystone natural gas pipeline, which would transport gas from the Appalachian Basin to markets through the eastern United States.

What Do Communities Want to Know About Pipelines?

Montgomery County, Virginia

Montgomery County: Inventorying and assessing underground pipelines for incident management (\$24,630)

With its demonstration grant, Montgomery County government will be investigating and implementing some of the recommended practices developed through the Pipelines and Informed Planning Alliance (PIPA). Montgomery County's Planning Director, Steve Sandy, is a member of the PIPA effort, serving on the Protecting Communities Task Team.

Montgomery County will develop a comprehensive map of pipelines, pipeline easements, and critical pipeline information for land use and emergency response planning throughout the county. Once this information is gathered, the county will explore changing the way it reviews development permits and possibly implement new zoning and subdivision ordinances to increase local pipeline safety. Two of the ideas under consideration are the development of Consultation and Planning Zones along the pipelines (see sidebar about these zones on pages 2 and 3).

The county also will be working with local pipeline operators to develop educational materials about things to consider when building or developing land around pipelines. Finally, Montgomery County will be developing a specific emergency response plan to be used in the unlikely event of a pipeline incident.

Montgomery County Pipelines

The main pipeline in the county is the East Tennessee Natural Gas pipeline, a 1,500-mile system that serves mainly Tennessee and Virginia. The pipeline, operated by Spectra Energy, is part of Spectra's larger 9,200 mile Texas Eastern Pipeline system which moves gas from Texas and the Gulf Coast to the mid-Atlantic and northeastern regions of the U.S.

Oak Ridge, Tennessee

Oak Ridge Utility District: Improving its distribution system monitoring capabilities, incorporating pipeline integrity data into its developing geographic information system (GIS), and expanding its pipeline safety public awareness program (\$50,000)

The Oak Ridge Utility District will use 42 percent of its grant to purchase and install seven remote monitoring units in areas of high risk on its distribution pipeline.

These units will enable the District to recognize pressure fluctuations, over-pressure, and changes in pressure that may indicate third party damage resulting in a release of gas.

Twenty percent of the grant will be used to upgrade its GIS so that employees throughout the District will have ready access to such distribution pipe segment information as installation and repair history, and leak survey data. This upgrade is a step towards the District's goal of implementing a pipeline integrity management program within its GIS.

The remainder of the grant will be used to expand the District's existing pipeline safety campaign to local and regional TV and radio

stations. This public awareness and education program has the potential to reach the more than 120,000 people who live in the two counties served by the District.

Small—But Important

The Oak Ridge Utility District is an independent, non-profit utility district that distributes natural gas to 13,000 customers in portions of Anderson and Roane Counties.



**Know what's below.
Call before you dig.**

Quarterman Nominated to Lead PHMSA



President Barack Obama has nominated Washington, D.C. corporate attorney Cynthia L. Quarterman to be the administrator of the Pipeline and Hazardous Materials Safety Administration (PHMSA). As the first step in the confirmation process, the U.S. Senate Committee on Commerce, Science and Transportation held a hearing on her nomination on September 23rd.

Ms. Quarterman was a director of the Department of Interior's Mineral Management Service during the Clinton Administration; at Interior she served in several positions from 1992 to 1999. After leaving government service, she returned to her law practice at Steptoe & Johnson LLP. She currently is a member of the firm's Regulatory and Industry Affairs Department, where she focuses her practice on litigation and administrative law. She earned her Juris Doctorate degree from Columbia University and Bachelor of Science degree in Industrial Engineering from Northwestern University.

Pipelines & Informed Planning Alliance (PIPA)—What's Next?

In the last issue of Safe Pipelines we noted there would be a meeting in July in Washington, D.C. to resolve differences between the pipeline industry and local government regarding proposed recommendations for land use practices near transmission pipelines. Carl Weimer, the Pipeline Safety Trust's executive director, participated in this meeting, and here is a synopsis of what occurred.

Risk Adverse vs. Risk Informed Practices

The pipeline industry representatives were concerned that some of the language and proposed practices in the report would leave the impression that pipelines were inherently a high risk that needs to be planned for. They referred to this as “risk adverse” planning and pointed to data that shows the actual chance of a pipeline failure in a high consequence area is extremely small. They argued that this small risk should be made clear to communities so they can accurately determine whether the benefits of new practices or regulations to mitigate for such a small risk outweighs the costs of implementing those practices. They also wanted communities to be able to compare those risks with other community risks such as truck accidents or train derailments so they are prioritizing the risks in their communities correctly. They referred to such a system to accurately compare all risks versus costs as “risk informed” planning.

The local government representatives disagreed and said that they thought the PIPA report does a good job of providing risk informed guidance. They also pointed out that while they understood the industry's concerns about pipelines being painted by some as inherently dangerous, it was a normal function of local government to consider and prepare for worst-case scenarios.

Industry was most concerned around the Consultation Zone and Planning Zone recommendations (see page 2 & 3 for descriptions). They feared that these would leave the impression that pipelines are unsafe, and also that local government would view these as mandates to be written into local regulations instead of just recommendations to be considered. The industry also had concerns that if ad-



A hazardous liquid pipeline running 15 feet from people's backdoors.

Photo: Weimer

opted as regulations new financial burdens could be laid upon them if property values decreased, development was restricted, or as new easements were required.

Local government viewed the Consultation Zone and Planning Zone recommendations as the “heart and soul” of the PIPA effort, and the place where local government does have some control in increasing safety if they so choose. They also pointed out that local planners were quite adept at picking and choosing recommended practices to fit their local needs, and there was little chance that many communities would ever adopt all the PIPA practices.

In the end the local government representatives proposed removing much of the language that the industry was concerned would give communities the wrong risk impression about pipelines, but they refused to agree to remove either the Consultation Zone or Planning Zone recommendations. Industry hinted that they may be able to live with this and agreed to review the language and provide clear recommendations for a path forward within the next few weeks. That was in July, and while we know that PHMSA has had discussions with both sides, as of the drafting of this newsletter no such path forward has been provided.

National Pipeline Safety Day—A Joint Effort

The last issue of Safe Pipelines spotlighted the work of Washington Congressman Rick Larsen (D) to have Congress designate June 10, 2009 as National Pipeline Safety Day. We're pleased to report success, thanks to his efforts and similar efforts of Washington State's two senators, Patty Murray (D) and Maria Cantwell (D).

Congressman Larsen's Resolution was co-sponsored by: Washington Congressmen Jay Inslee (D), Brian Baird (D), Jim McDermott (D), and Adam Smith (D); New Jersey Congressmen Frank Pallone Jr. (D) and Bill Pascrell Jr. (D); and Pennsylvania Congressman Jim Gerlach (R).

The House Committee on Transportation and Infrastructure is the likely “first stop” for bills to reauthorize the Pipeline and Hazardous Materials Safety Administration (PHMSA) in the coming year. So the remarks of its chair, Jim Oberstar (D-Minnesota), in support of the resolution

were particularly noteworthy: “Much work regarding pipeline safety remains to be done. PHMSA has not implemented many of the mandates from the Pipeline Inspection, Protection, Enforcement and Safety Act of 2006. Over the next several months, as we look to reauthorization of the pipeline safety program in fiscal year 2011, we will work with PHMSA to ensure full implementation of the Act.”

Speaking in support of her Senate resolution on June 10th—the anniversary of the Bellingham, Washington pipeline tragedy—Senator Murray stressed her steadfast commitment to pipeline safety: “For me,” she noted, “this ten year anniversary is a reminder of a day of terrible pain that we must never forget. But it's also a reminder that we can't just assume someone else is taking care of things. We can't slip back to where we were before. We have to stay vigilant and continue to work to improve the safety of our pipeline systems.”

Remembering a Tragedy and Reflecting On a Decade of Healing

On June 10th, a memorial walk and a community gathering in Bellingham, Washington marked the tenth anniversary of the pipeline rupture near Whatcom Creek that resulted in the deaths of Wade King, Stephen Tsiorvas, and Liam Wood, and significant environment damage. The Pipeline Safety Trust and the City of Bellingham were the main organizers of these commemorative events.

During the afternoon memorial walk through Whatcom Falls Park, over 50 people—including news media from as far away as Seattle—stopped at 10 interpretative stations where seminal events of the June 10, 1999 tragedy occurred. There they listened to Trust Executive Director Carl Weimer or City Environmental Resources Manager Clare Fogelson discuss the site's significance in the chronology of the pipeline's rupture and aftermath, and describe the measures taken to restore the natural environment.

In the evening, more than 140 people came together in the city's Maritime Heritage Park to remember Wade, Stephen, and Liam, and to listen to poetry and music. They also heard from local, state and federal officials how that day ten years earlier not only changed families and a community, but a nation: this tragedy raised the awareness and concerns of Bellingham's residents about pipelines and pipeline safety, which ultimately led to stronger pipeline safety laws at the national level. People also were reminded that continued vigilance is necessary to prevent future pipeline failures in Bellingham and elsewhere.

The gathering ended with Stephen Tsiorvas' step-father, Skip Williams, unveiling a model of the Community Healing Wheel: a cast bronze prayer wheel that will be erected along Whatcom Creek as a repository for written prayers and reflections.



Skip Williams, Stephen Tsiorvas' step-father, unveils a model of the Community Healing Wheel at the community gathering.

Many placed writings in the model itself as they left the park.

[Editor's Note: Donations to the Prayer Wheel Project, which are tax-deductible, can be made on-line at http://pstrust.org/library/docs/PrayerWheelDonation_000.pdf. Detailed information about the June 10, 1999 pipeline explosion is available on-line at <http://pstrust.org/whatcomcreek/index.htm>.]



photo: Chris Coffin

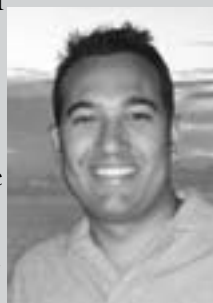
Changes to the Pipeline Safety Trust's Board of Directors

Breean Beggs (left), who has been involved in pipeline safety activities for over a decade, did not seek re-election when his term expired. He will, however, continue to serve the Trust in an important and visible role—chair of the Development Committee.

Breean was an attorney in private practice in Bellingham, Washington, when the Olympic pipeline ruptured on June 10, 1999. He became one of the first to join SAFE Bellingham, a group determined to prevent future pipeline failures in the community and the forerunner of the Trust.

Instrumental in working with the U.S. Department of Justice to obtain the Trust's initial funding, Breean was elected to the board early in the Trust's existence. A steadfast advocate for pipeline safety, he served as the board's president and testified on the reauthorization of federal pipeline safety laws before Congress in 2004.

In 2004, Breean left his Bellingham law practice to become the executive director of the Center for Justice in Spokane, Washington. The Center is a non-profit law firm dedicated to creating the experience of justice for those of limited resources.



Breean's contributions to improving pipeline safety and making the Trust a strong organization have been significant. While his leadership and counsel will be missed on the board, the directors and staff are pleased that he will continue to be involved with the Trust and its work.

With the election of Michael T. Guidon (pictured below) as its newest member, the Pipeline Safety Trust's Board again has shown its commitment to expanding its expertise and broadening its perspectives. Michael comes to the board from the worlds of finance and accounting.

Michael is a senior financial analyst in the Seattle office of Goldman Sachs and also a CPA. Before joining Goldman Sachs, he was an accountant at Deloitte & Touche, LLP. He earned a B.A. (*magna cum laude*) in Accounting and Finance from Western Washington University.

He currently serves on the Investment Advisory Board for the Western Washington University Foundation's Financial Management Scholarship Fund. He is also involved with ArtsFunds in Seattle, whose cash grants, capacity building, and other services make arts groups in the area stronger.

Michael, a Bellingham native who now lives in Seattle, was a high school friend of Liam Wood who was killed in the 1999 Olympic Pipe Line Tragedy. Before the pipeline in Bellingham ruptured on June 10, 1999, Liam and Michael were to room together as freshmen at Western Washington University.



Chris Coffin

As you have read inside this newsletter, people in communities across America are interested in finding out more about the pipelines that run near them. This year's conference will focus on the new Community Technical Assistance Grants provided by the Pipeline and Hazardous Materials Safety Administration. Many of the grant recipients will be at the conference to discuss what types of pipeline safety issues their grant proposals are aimed at, and to meet each other and a wide range of pipeline safety stakeholders. There will also be sessions on the status of the Pipeline and Informed Planning Alliance, what types of information is and is not available, and community awareness programs.

Interested in finding out what other local communities want to know about pipeline safety? This is the place to get those answers.

Newsletter Registration Special (Good until Oct. 30th):
\$500 for General, \$200 for Government & \$50 for Citizens
For these reduced rates write "Newsletter Special" on your registration form
More information and a faxable registration form at:
<http://www.pstrust.org/conference/2009conference.htm>

Hope To See You There!

Join Us at This Year's Conference

Pipeline Safety - What Communities Want to Know

November 5 & 6, 2009
New Orleans, Louisiana
The historic Hotel Monteleone



www.hotelmonteleone.com